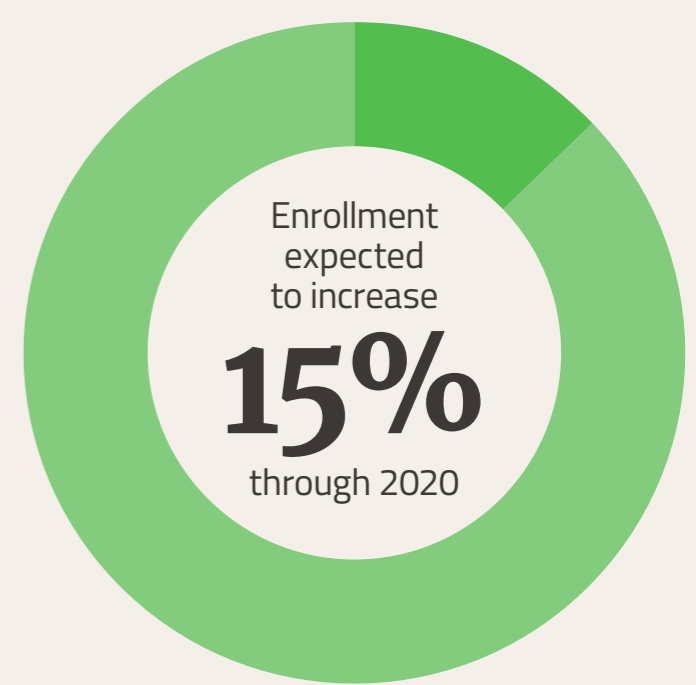
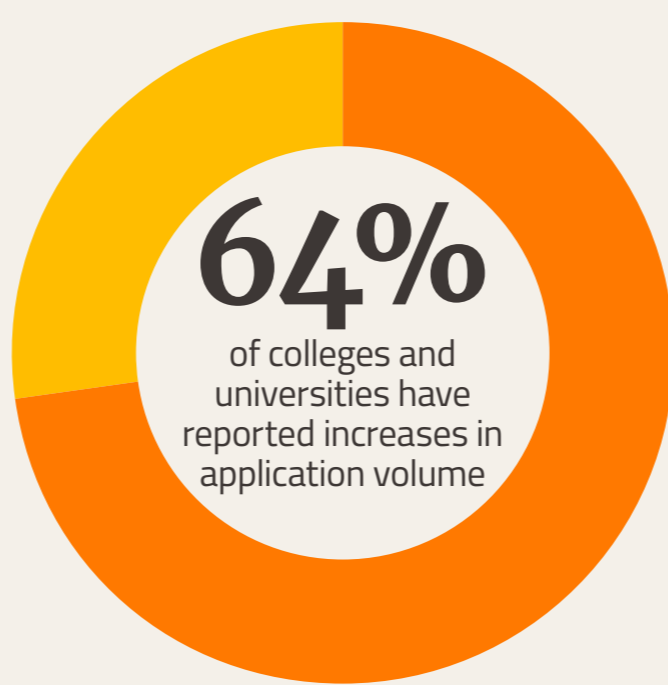
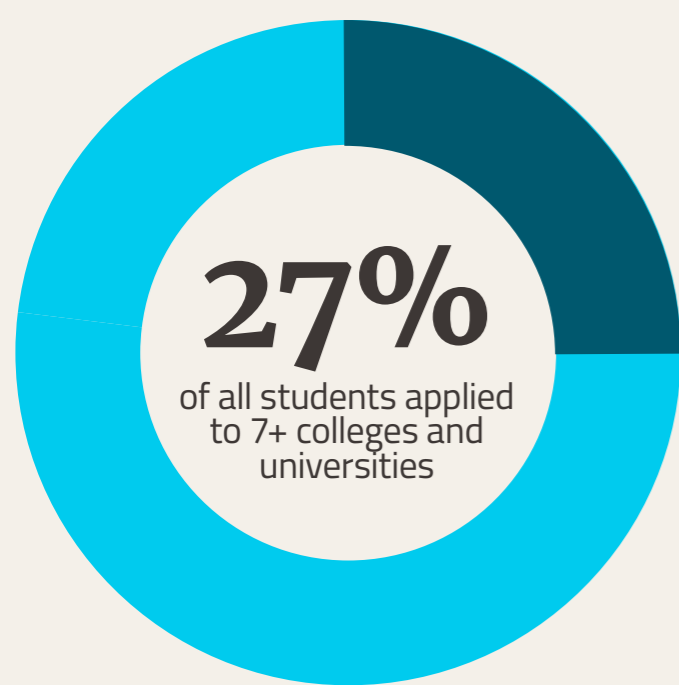


COMPETING FOR STUDENTS

How you manage admission documents from start to finish can make or break the success of your school. Are you hitting bottlenecks or is it smooth sailing?

ENROLLMENT BY THE NUMBERS



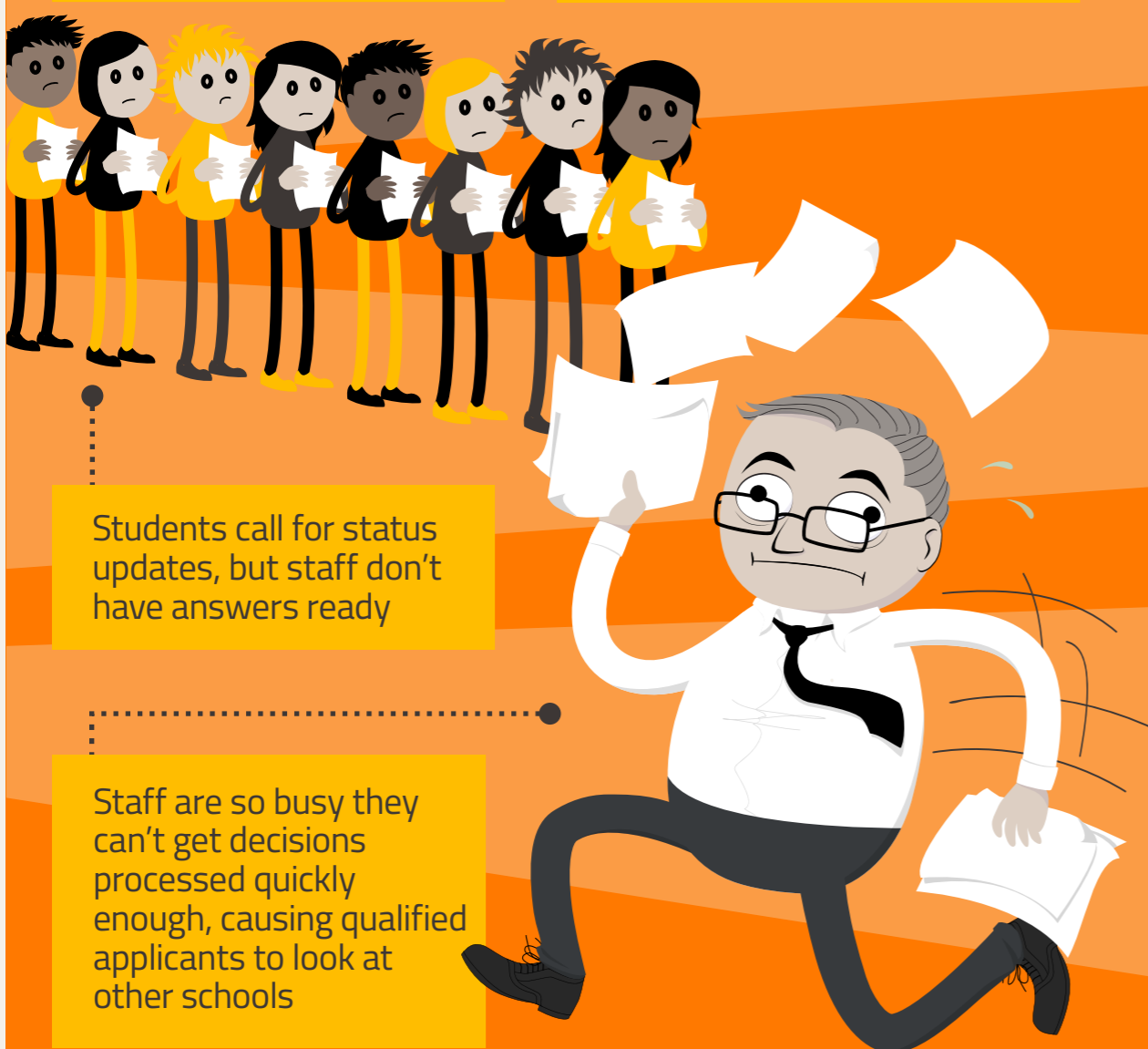
BOTTLENECK TECH UNIVERSITY

Throughout the enrollment process, paperwork, hard-copy files, and lack of automation mean staff work hard and don't see the right outcomes. Files are lost in the shuffle, which causes service to suffer.

ADMISSIONS

Ratio of applicants to admissions staff, USA - **527:1**

It's a manual, time-intensive process for staff to match orphaned documents and complete files for review



Students call for status updates, but staff don't have answers ready

Staff are so busy they can't get decisions processed quickly enough, causing qualified applicants to look at other schools

FINANCIAL AID

6 out of 10 students aren't sure of their financial aid application status



With records in multiple locations, staff have a difficult time locating and verifying the increased volume of documentation



Delays in financial aid award processing cause students to complain and potentially withdraw

TRANSFER CREDIT

1 IN 3 students transfer schools at least once

Average number of transcripts per student: **2-3**

Students wait weeks, sometimes months, due to delays in processing transcripts



Staff spend up to **70 MINUTES** per transcript on manual data entry and equivalency review

By the time most transcripts are reviewed, students are taking courses they don't need or have enrolled elsewhere



END RESULT

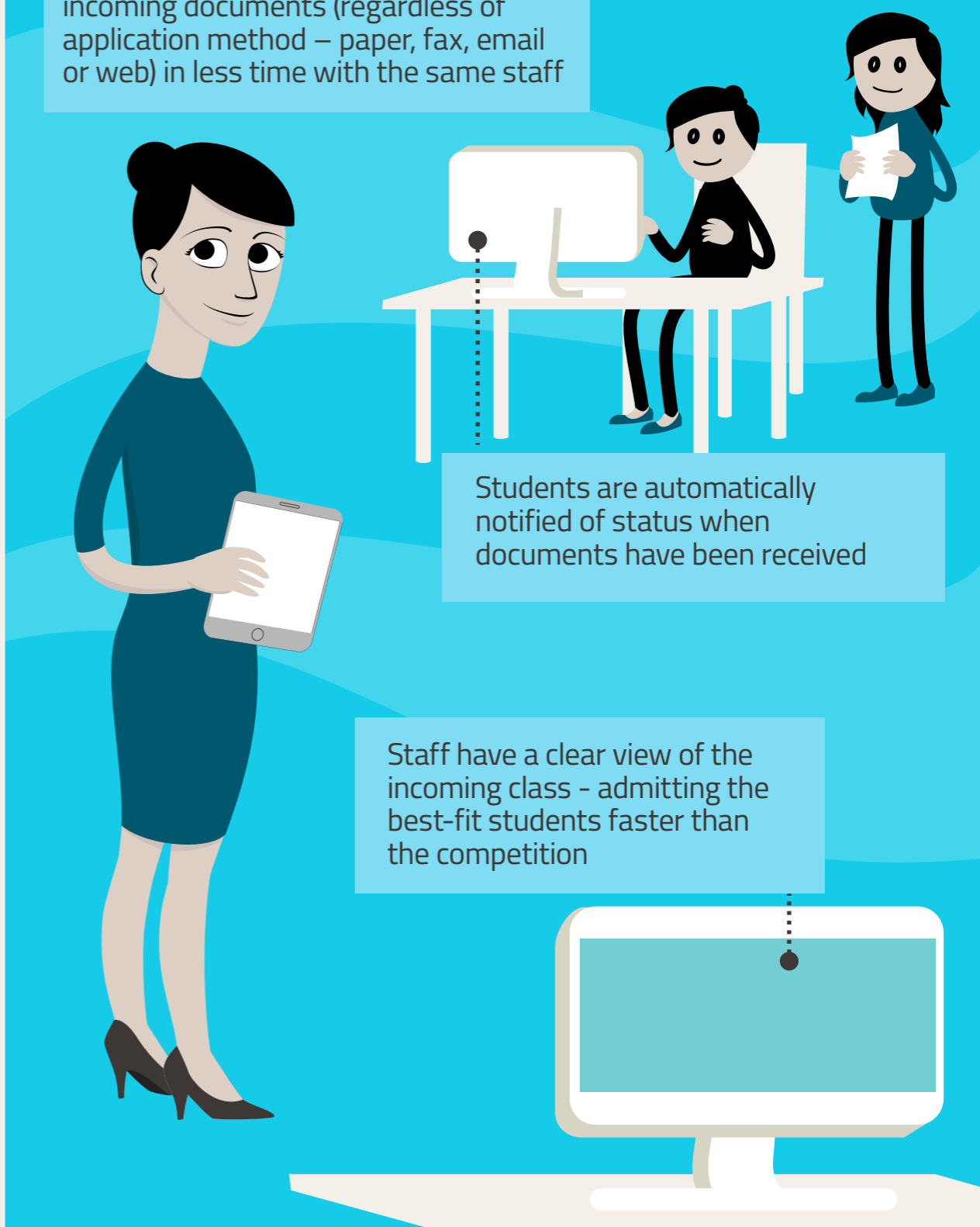
Working hard without enough to show for it. Students enroll or transfer to other schools for on-time graduation.

STREAMLINED STATE UNIVERSITY

As students' documents arrive, they are automatically and instantly available in the student information system (SIS). Staff focus on high value tasks, improve service across the board, and stay ahead of the curve - finding best-fit applicants faster than the competition.

ADMISSIONS

Staff automatically process more incoming documents (regardless of application method - paper, fax, email or web) in less time with the same staff



Students are automatically notified of status when documents have been received

Staff have a clear view of the incoming class - admitting the best-fit students faster than the competition

FINANCIAL AID

Because financial aid checklists are automatically updated as new documents arrive, students have greater visibility into their status



Award letters are received weeks earlier, allowing for more informed students, making more informed decisions

TRANSFER CREDIT

By eliminating manual data entry by more than 90%, staff have more time to spend on student service



By reducing transfer credit evaluation from months to days, students receive faster and more accurate degree audits - keeping them on track for graduation



END RESULT

Working smart and achieving goals. Increased rates of matriculation, retention, graduation, and satisfied alumni!

WHICH UNIVERSITY WOULD YOU ATTEND?

SOURCES:

<http://www.nacacnet.org/research/PublicationsResources/Marketplace/research/Pages/StateofCollegeAdmission.aspx>
<http://ticas.org/files/pub/AfterFAFSA.pdf>
<http://voices.washingtonpost.com/answer-sheet/college-admissions/new-study-1-in-3-college-stude.html>
AACRAO 2011 academic record and transcript guide. American Association of Collegiate Registrars and Admissions Officers

Brought to you by:

OnBase
by Hyland