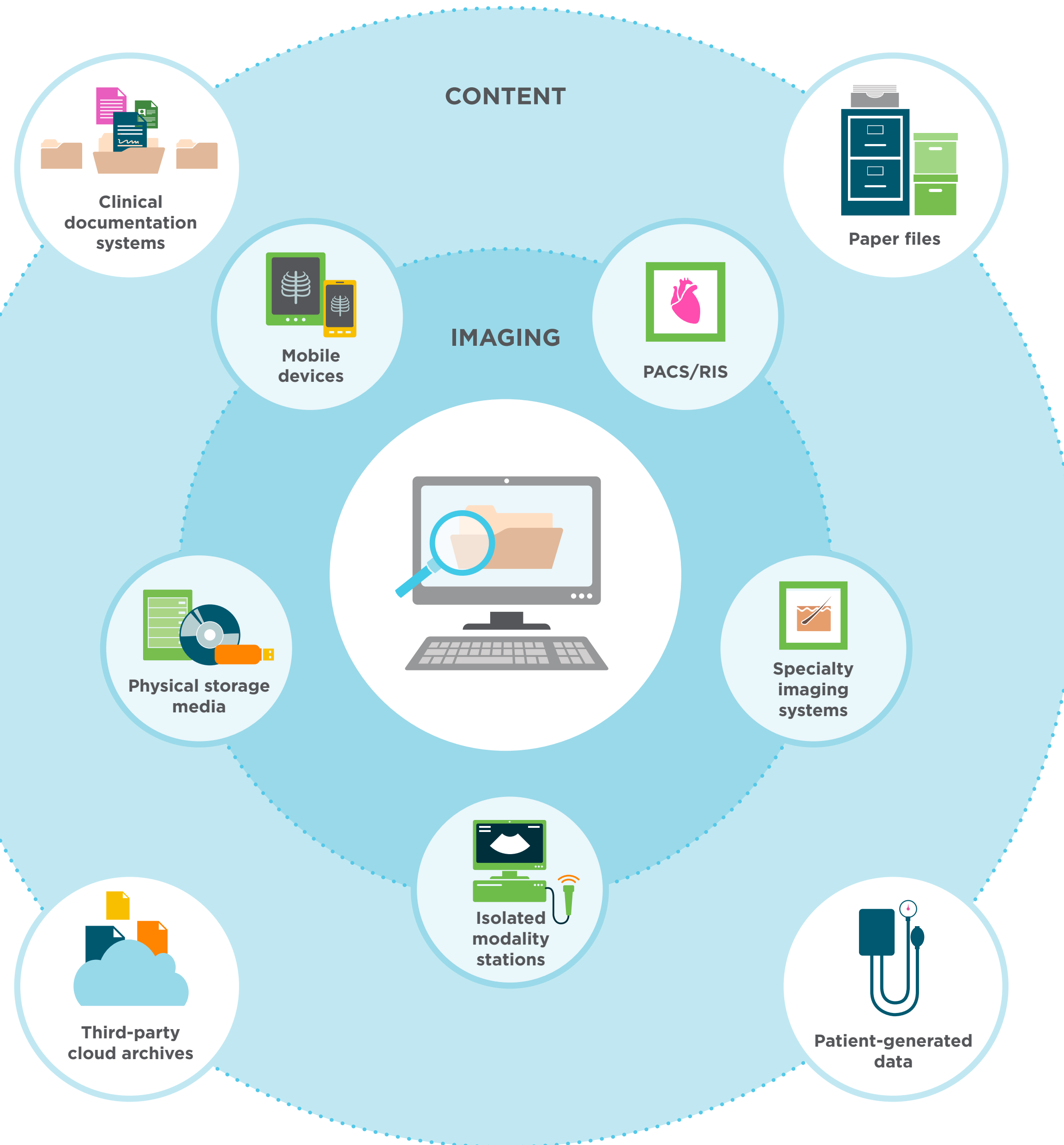


What's missing from your EPR?

As much as **80 percent*** of clinically relevant content lives outside of the electronic patient record (EPR) and isn't natively stored or managed by these systems. Here's a look at some of the other major sources of patient data:



CONTENT

Clinical documentation systems: Patient administration systems, records management systems and other departmental content management applications are a treasure trove of scanned PDF or Word-based documents, registration forms, referral documents, patient privacy documents and more.

Paper files: Many healthcare providers still maintain file cabinets full of paper medical records in addition to their EPR.

Patient-generated data: Health data generated by sensor-based or biometric devices (e.g. smart scales, blood pressure cuffs, A1C monitors, etc.) to monitor health and wellness remotely.

Third-party cloud archives: Commercially available cloud archives such as Dropbox and Google Drive can often be sources where clinical documents, images and other patient data is stored.

IMAGING

Mobile devices: Visible-light images captured by clinicians on enterprise-issued smartphones, tablets or other mobile devices at the point-of-care.

PACS/RIS: These systems store DICOM-based radiology and cardiology images (e.g. MRIs, CT scans, etc.).

Specialty imaging systems: Common to departments such as Dermatology, Gastroenterology, Ophthalmology, Pathology and more, these systems store non-DICOM visible-light image files (e.g. JPEG, AVI, MPEG).

Isolated modality stations: Isolated modalities (such as ultrasound devices) are often used to capture images at the point-of-care. These imaging studies don't always have traditional radiology orders associated with them and can be difficult to track and manage.

Physical storage media: Medical images or documents archived on or transported from other providers on CDs, DVDs, USB drives and tape media.

To build a complete patient record and see your whole patient, all of these siloed clinical information sources should be integrated with your EPR. See how connected healthcare solutions from Hyland can help.

Learn more at [HylandHealthcare.com](https://www.hyland.com/healthcare)

*Multiple reports reinforce this point — Gartner Jan 2010, IDC 2012, McKinsey

©2020 Hyland Software, Inc. and its affiliates. All rights reserved. All Hyland product names are registered or unregistered trademarks of Hyland Software, Inc. or its affiliates in the United States and other countries.